

SONOACE R7

Sonoace has been a leading name in diagnostic ultrasound since its foundation in 1985. As one of the only companies dedicated solely to ultrasound imaging, we have remained at the forefront of research and development in 3D/4D technology for 25 years. Since revolutionizing the industry with the introduction of the first commercial 3D/4D ultrasound device, we have continued to innovate technologies that have made 3D/4D ultrasound an indispensable diagnostic tool for clinicians the world over. Today we continue to pioneer revolutionary ultrasound technologies and develop the ultimate in 3D/4D ultrasound imaging systems.

www.sonoace.de | info@sonoace.de

SONOACE
a subsidiary of SAMSUNG MEDISON

CT-R7-TTW-ISP-101126EN



A Slim and Ultra Compact System,
With Advanced Performance

SonoAce R7 Ultrasound system



SONOACE
a subsidiary of SAMSUNG MEDISON



Ergonomic design

The SonoAce R7 is a slim and ultra-compact system, with many ergonomic features one would not expect in this class. The control panel can be set by the user to the desired height, it has a very simple user interface, the menus are customizable and, thanks to its light weight, it provides easy mobility.

Control Panel

The control panel can easily be adjusted to the user's preferred height for a better working position. The control panel's design contributes to the improved workflow of the SonoAce R7.



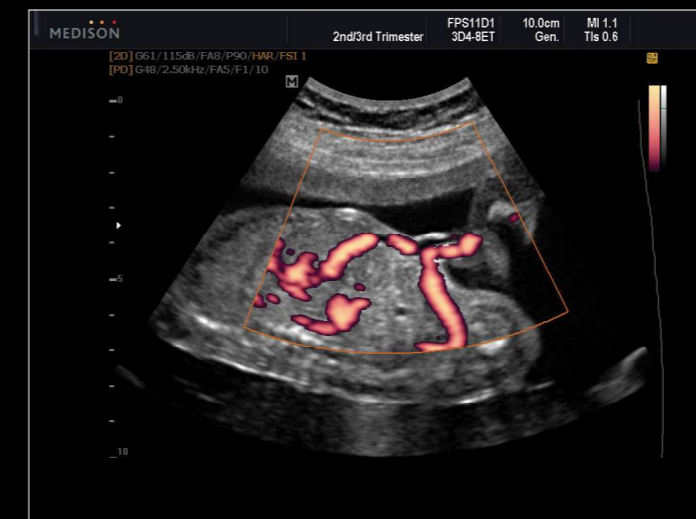
17" Flat-screen Monitor

Thanks to the 17 inch flat LCD monitor, the SonoAce R7 has a clearer image which contributes to a more accurate diagnosis.

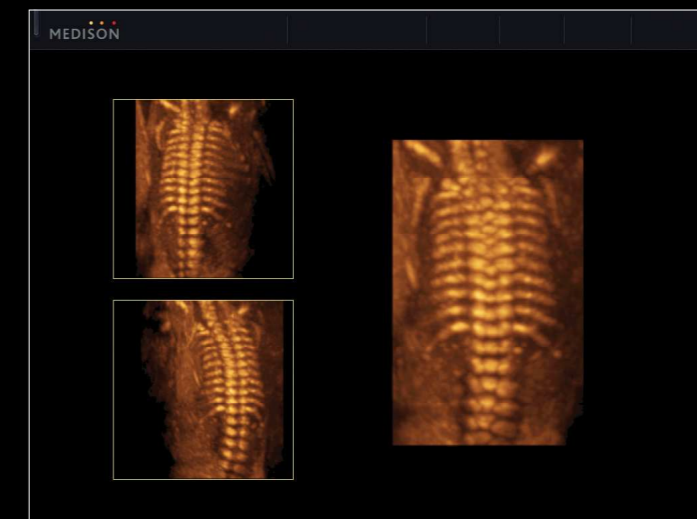


Simple User Interface

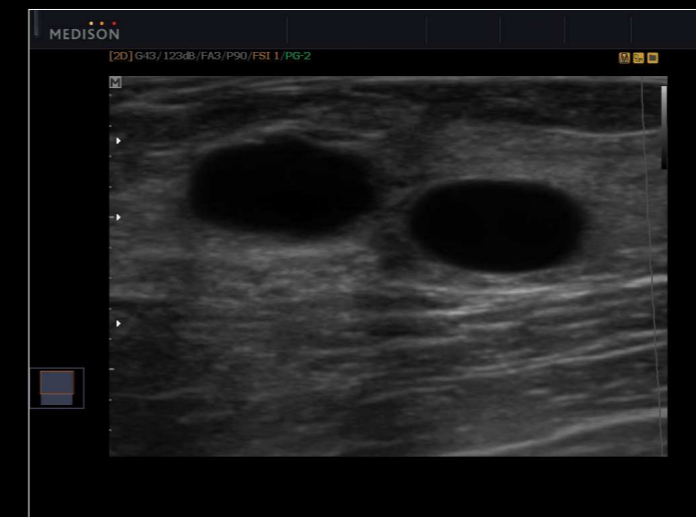
To achieve a quicker diagnosis, Sonoace designed a simple user interface, customizable menus and easy-to-select user presets, which lead to better imaging.



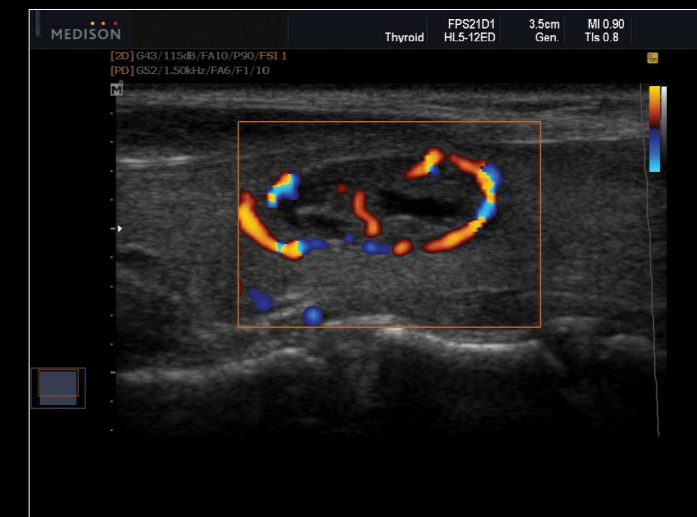
Fetal blood circulation



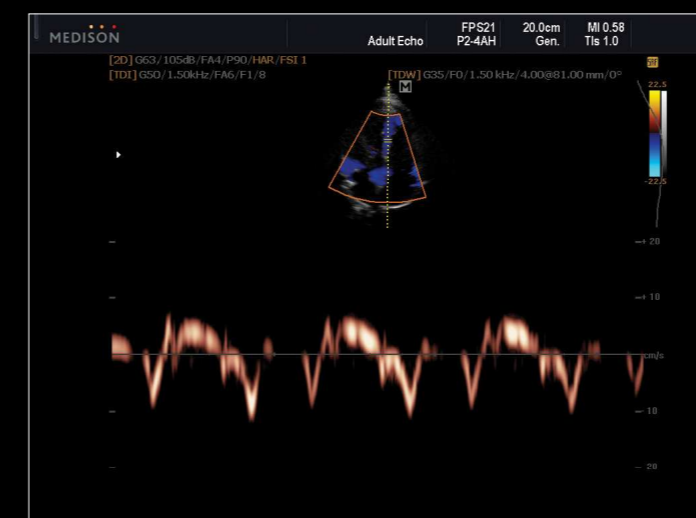
Fetal spine by 3D cine



Breast cysts with Spatial Compound Imaging



Thyroid nodule of DPDI image



Adult heart with Pulsed Wave TDI



Carotid artery Doppler image

Image Gallery



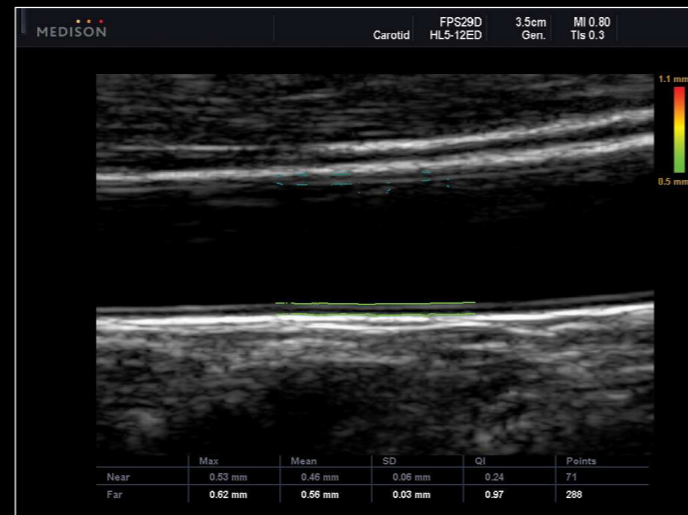
Cleft lip in 3D



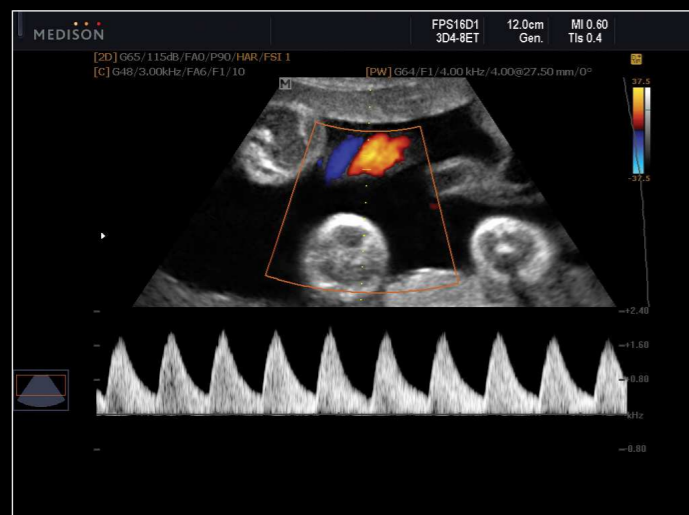
Fetal profile at 22 weeks



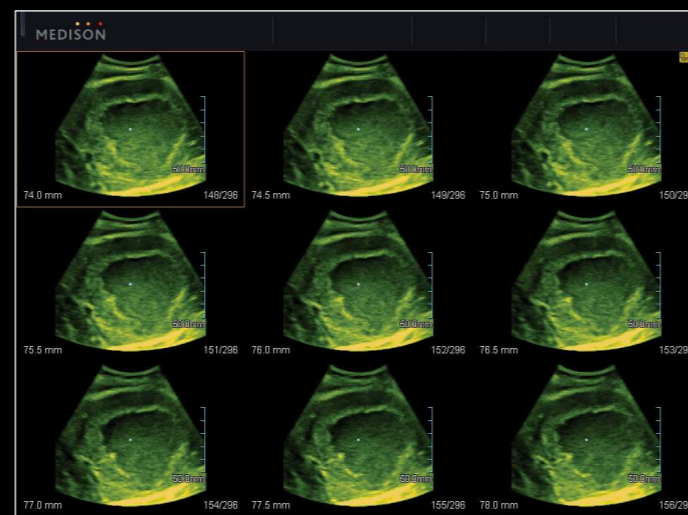
Fetal brain in Multi Slice View



Carotid artery with Auto IMT™



U. A. Doppler (zoomed)



Liver tumor in Multi Slice View

SONOACE
R7



Front and rear handle

To further improve the mobility of the SonoAce R7, it is equipped with a handle on both the front and the rear.

Slim and Lightweight

The ultra-compact and slim design takes up less working space. The light weight and swivel wheels provide easy mobility.



A slim and ultra compact system, with advanced performance

The SonoAce R7, with its innovative, ergonomic, and ultra-compact design, increases patient throughput by providing a simple user interface and Sonoace outstanding 2D performance. The SonoAce R7 also offers very sensitive Pulsed Wave, Continuous Wave and Color Doppler and, if required, some of the latest 3D/4D functions.



Re-defined

The SonoAce R7, with Sonoace outstanding 2D performance, very sensitive Pulsed Wave, Color Doppler and 3D/4D diagnostic technology, redefines how to meet the essential needs of users. The SonoAce R7 offers 3D XI™, Auto IMT™, Continuous Wave Doppler, and many additional tools for diagnosis in multiple applications.

3D/4D

Sonoace Live 3D and 3D XI™ ensure that the system can be used for both baby facing and diagnostic 3D/4D. 3D XI™ comprises three innovative imaging applications, Multi-Slice View™, Oblique View™ and Volume CT™. 3D XI™ offers complete and precise control over 3D/4D volume data manipulation for maximum diagnostic accuracy.

- **Live 3D**
- **3D XI™**
 - Multi-Slice View™
 - Oblique View™
 - Volume CT™
- **DMR™**
- **Volume Cine**

Easy operation

Advanced 2D recognition software, called Quick Scan™, allows the SonoAce R7 to automatically optimize the gray-scale image with the simple push of a button. Doppler Quick Scan automatically adjusts the baseline and scale of the Doppler spectrum for faster diagnosis.

- **Quick Scan™**
- **Doppler Quick Scan**
- **Simple User Interface**
- **Full Custom Measurement**

Image Quality

The effective utilization of a wide Dynamic Range, in combination with sophisticated image processing features, ensures consistently high-resolution images with the SonoAce R7.

- **FSI™ (Full Spectrum Imaging)**
- **SRF™ (Speckle Reduction Filter)**
- **HI (Harmonic Imaging)**
- **Dynamic MR™**
- **SCI (Spatial Compound Imaging)**